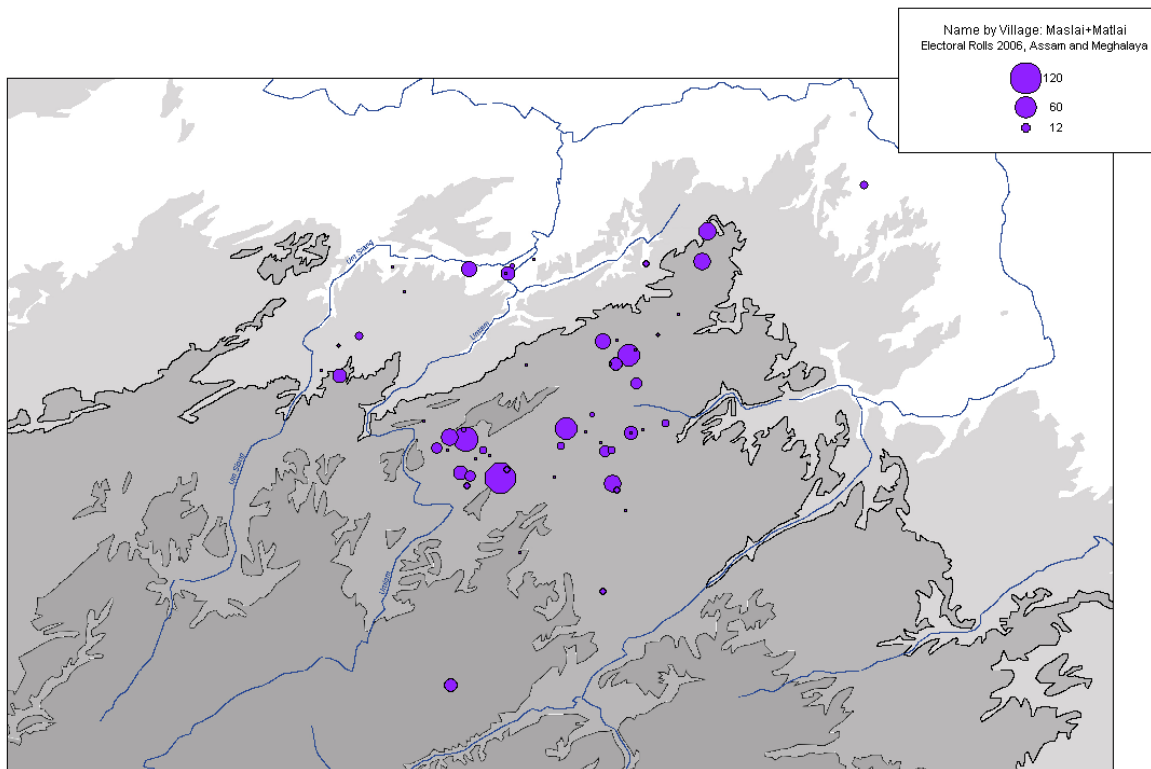


Using Electoral rolls in Cultural studies.

Number of voters by village bearing the names “Maslai” or “Matlai” in the 2006 Electoral rolls, Karbi Anglong District (Assam), and Umsning block of Ri-Bhoi District (Meghalaya).



The map above is the output of a series of processes :

The rolls for Assam have first been translated from Assamese to latin letters. Then it has been possible to count each different family name (first by hand and after a while using a tool which has been developed for this purpose). This has resulted into statistical tables giving the occurrence of each name in each village. The localization of each village had to be found, because no coordinates or GIS layer is available, at least to the general public. Finally a GIS software was used to link the tables of names with the village locations and to display a thematic analysis.

Among communities with a clanic social structure, the family name generally refers to a clan membership. Thus the map of family names of voters gives a fair account of the distribution of clans. The map above shows the distribution of voters bearing a name common among both people who claim themselves to be “Tiwa” and people who claim to be “Khasi”.